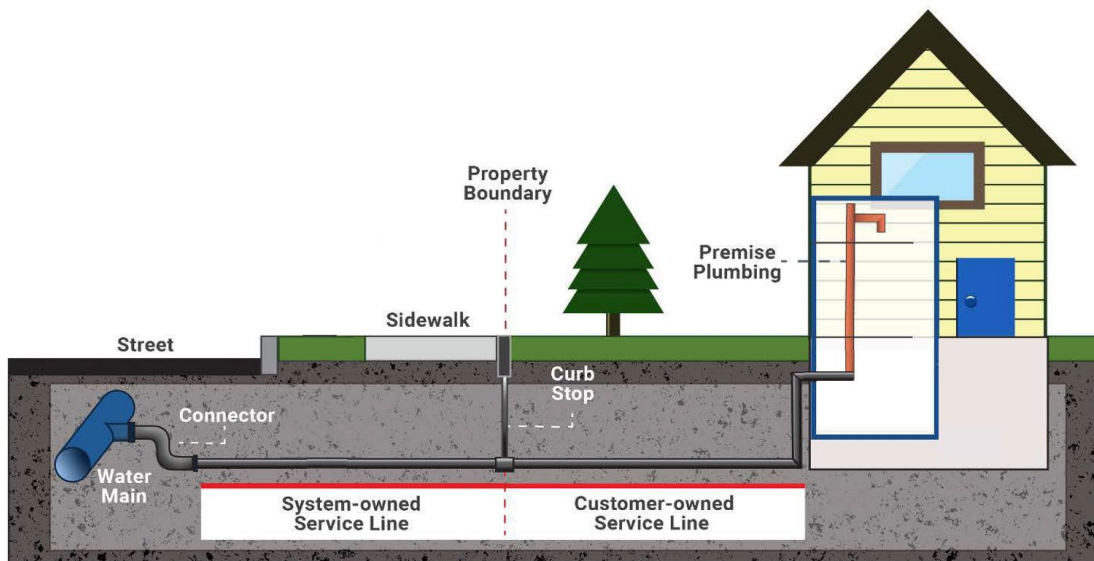


Dear Iona Residents:

To comply with EPA regulations, public water systems are required to complete an inventory of service lines, and this survey plays a vital role in helping your public water system fulfill this obligation effectively. The City of Iona is required to complete this inventory for our water system. We need your help with this by completing and returning this survey as soon as possible. The following information will help you determine where your water service line is and what material the line is made of.

Find Your Water Service Line

Before completing the survey, you need to determine where the water service line is and how it connects to your home. If you need assistance finding your service line, contact the Iona Public Works Director at (208) 716-0836 or email publicworks@cityofiona.org.



Curb Stop

To locate where the water service line enters your home, look for a curb stop valve. These are usually found at the front of your property near the street or sidewalk and are ground-level boxes labeled "water". Once you find them, follow the shortest path to your home. The water service line should enter the building through the floor or foundation wall in this general area.



Test the Pipe Material

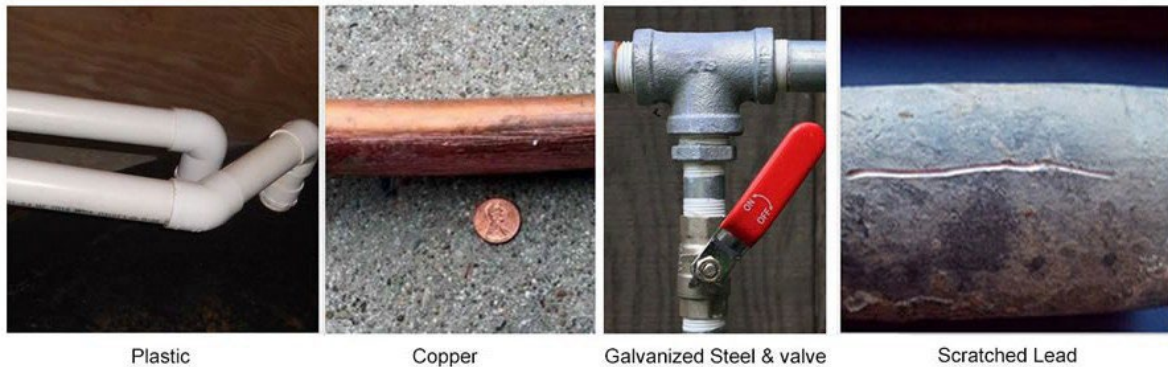
Once you've found where the water service line enters your home, look for a spot on the pipe closest to the wall or floor before it connects to a valve. At this spot, you can test the material the pipe is made of.



Testing Tools

Use the following tools to determine the type of pipe material the water service line is made of.

- **Refrigerator magnet**—use to test if the pipe is made of steel.
- **Coin or key**—use to scratch the pipe to reveal the metal's color and hardness.
- **Flashlight or mobile phone**—light to clearly see the pipe.



Plastic—This pipe comes in different materials and colors. If you tap it with a coin, the pipe does not make a ringing sound.

Copper—Scratch the pipe and it appears orange and shiny like a penny, which means the pipe is made of copper. Additionally, a magnet will not stick to it.

Galvanized Steel or Iron—The pipe appears silvery gray and is difficult to scratch and a magnet sticks on it. The pipe is made of galvanized steel or galvanized iron.

Lead—The pipe is silvery gray and (1) is easily scratched, (2) the metal seems soft, and (3) a magnet does not stick to it—likely lead pipe.



Water Line Service Survey

Location Information

Address: _____,

Iona, ID 83427

Please answer the following questions:

1. Do you own or rent this building?

Own

Rent

2. What year was the building built? _____

3. To your knowledge, has the water service line for your building ever been replaced? If yes, what year was it replaced?

Yes Year: _____

No

Do Not Know

4. What material is your water service line? (Choose all that apply)

Lead

Copper

Steel (Ductile Iron, Galvanized)

Plastic (HDPE, PVC)

Unknown

Cannot Locate Service Line

5. How did you determine the material?

Scratch Test

Visual

Cannot Locate Service Line

Plumber or Other Qualified Professional

6. Would you allow a city technician to check the material of your service line?

Yes

No

Thank you for your time. Please return the completed survey to the City Office or Water Payment Box at: 3548 N. Main Street,

or mail it to:

P.O. Box 487
Iona, ID 83427